

SOUTHPORT STREET LIGHT POLICY (10/02/2025)

Purpose

To provide standards for outdoor lighting and to establish policy regarding street light installation and maintenance. It will be the policy of Southport to reduce negative impacts on wildlife, human eye sensitivity and the natural beauty of the night sky while providing light to enhance safety and City appearance.

Coverage

This policy shall apply to all outdoor areas within the municipal limits of the City of Southport. In conjunction with the phased implementation of the underground project, new fixtures/poles consistent with the Street Light Policy will replace existing street lights. Until new fixtures/poles are installed as part of the phased implementation of the underground project, obsolete fixtures that fail will be replaced by temporary fixtures selected by the Public Works Department.

Lighting Plan

A plan that details lights for parking, landscaping, exterior building lighting, streets and signs is required for any proposed highway commercial, business district, industrial, Planned Unit Development (PUD), or Major Site Plan project that requires review by the Southport Planning Board. Wherever possible, solar and dimming technology will be utilized to provide desired light conditions.

Definitions

Central Business District luminaire: Acorn style LED fixture on decorative black pole.

Luminaire: A complete electric light unit. Luminaire for the purpose of this policy will be luminaires pre-approved by the City of Southport and available through the City of Southport electrical installation and repair provider. All fixtures shall meet International Dark Sky Association standards and will have a color temperature of 2700 Kelvin (K) or less. (Appendix 4 identifies approved luminaires for use in Southport.)

Light Source: (Lamp) The light emitted by Light Emitting Diodes (LEDs) and fiber optics is required. The maximum color temperature permitted is 2700 Kelvin (K). Existing light sources of incandescent, metal halide, or high-pressure sodium will be replaced with 2700K LED whenever a light source needs repair, replaced or as part of a maintenance plan.

Southport Historic District: Refer to the Southport Historic District map retained in the Planning Department.

Southport Special luminaire: Single bell-shaped fixture with LED as approved by the City of Southport.

Street Light Map: Color coded map attached to policy (Appendix 5). Colors identify criteria to be followed for luminaire installation.

Artificial Light General Use

A. Street Lighting fixtures may not exceed 40 feet in height (as measured from the ground to the top of the pole). The City of Southport may permit fixtures above this height when necessary to provide illumination for situations other than streets such as but not exclusive to: stadiums, water tanks, towers or recreation fields.

B. Lighting within any property that illuminates or interferes with the reasonable use or enjoyment of any other property is prohibited.

C. Blinking or flashing lights shall be prohibited unless the lights are required as a safety feature and approved by the City of Southport.

Lighting of City Maintained Streets

It is the goal of this policy to provide safe, effective lighting on City of Southport maintained streets consistent with the community's historic character and residential neighborhoods. Lighting and maintenance of streetlights will be the responsibility of the City when the lights are directly connected to the City of Southport electrical grid. If the streetlights on city maintained roads are the property of BEMC and are connected to the BEMC electrical grid, the cost of lighting and maintaining the streetlights will be a shared responsibility between the City and HOA/POA. In all situations, the City's maximum responsibility/contribution to the cost for operation and maintenance will be an amount that is equal to or less than the City's monthly power and maintenance cost for a standard streetlight under this policy connected to the City of Southport electrical grid.

A. At any specified location, lighting shall be installed so that the level of illumination measured in foot-candles (fc), falls within the appropriate range. Foot-candle measurement is determined by measuring the lighted area on pavement, at any given point.

B. Streetlights shall be installed within the road right of way or as close to lateral property lines as possible. Shorter or longer spacing intervals are permitted to accommodate the vertical or horizontal street alignment or natural features such as trees.

C. New street light luminaires and poles may replace existing fixtures, when necessary, to accomplish illumination measured in foot candles in accordance with the lighting chart in this document. Appropriate luminaire and pole types will differ depending on the location where the streetlight is to be installed. New and replacement poles made out of wood, concrete or composite are permitted. . If minimum safe light conditions do not exist at a particular location, additional streetlights may be installed.

D. Residents along a street may request additional street lighting beyond what is already installed, provided the requested additional street lighting is approved by the City. Requests shall be made by completing the Southport Street Lighting Request Form (See Appendix 3). The City shall determine

the area of influence on a case-by-case basis. If approved, the City will process the request and may cover all costs associated with street light installation if funds are available as determined by the City.

E. Residents may request the relocation of a streetlight. Requests shall be made by completing the Southport Street Lighting Request Form. The City shall consider such a request if the relocation does not reduce the illumination below minimum foot candles. Relocation costs and all facilities abandonment costs must be paid in full to the City, in advance, by the resident(s) requesting the relocation if the request is approved but funds are not approved by the City.

F. When new streets have been completed according to City standards and accepted by the City for maintenance, a request for adoption of the installed streetlights can be made by the developer or HOA/POA.

G. In cases of annexation, where the street(s) meets City standards and have been accepted by the City, the streetlights can be considered for adoption by the city. When applicable, the HOA/POA shall make a request for the City to evaluate existing streetlights for adoption. If the streetlights conform to City standards, the city may adopt the streetlights.

Lighting of North Carolina Department of Transportation (NCDOT) Maintained Streets

NCDOT allows the installation of utilities, including lighting along NCDOT maintained roadways through the encroachment process. Several roads in the City of Southport are maintained by NCDOT. If the City plans to change the existing street lighting design on NCDOT maintained roads, the new lighting design must be submitted to and approved by NCDOT, through the encroachment agreement process prior to installation.

Street Lighting Map

A. HOA /POA in a Planned Unit Development or Subdivision (map color purple): Street lights will be identified on plans submitted by the developer to Development Services for new construction or by Homeowners/Property Owners Organization if lights are being replaced.

- 1) The City of Southport will not pay for any costs associated with the lighting of private streets, parking lots, alleys or driveways.
- 2) Luminaires and poles used in Planned Unit Developments and Major Site Plans must be approved by the City of Southport.
- 3) Streetlights will be placed at all street intersections.
- 4) See chart for light levels for streets.

B. Waterfront and Downtown Area Streets (map color blue): Streets highlighted with blue on map that are located in the Waterfront Area, the Yacht Basin, E. Moore St., and including Howe St. up to 14th Street.

- 1) Lighting in this area will be the Southport Special luminaire mounted on concrete poles.
- 2) See chart for light levels for streets and intersections.
- 3) Streetlights will be placed at all street and crosswalk intersections.

C. Central Business District (map color red): Streets highlighted with red on the map shall conform to the following standards:

- 1) Utilize a combination of acorn fixtures on decorative poles and standard armed fixtures on wooden poles at intersections.
- 2) See chart for light levels for streets.
- 3) When underground electricity is installed in this area, the standard armed fixtures/poles at intersections shall be replaced by Southport Special luminaires on concrete poles.

D. Streetlights on Residential Area Streets (map color green): Streets highlighted with green on map in residential areas beyond the Waterfront/Downtown area and are not part of an HOA/POA; lighting on these streets shall conform to the following standards:

- 1) Streetlights will be Southport Special luminaires mounted on concrete poles.
- 2) See chart for light levels
- 3) Streetlights will be placed at all street and crosswalk intersections.
- 4) When underground electricity is installed in this area, the standard armed fixtures/poles shall be replaced by Southport Special luminaires on concrete poles.

E. Streetlights on Main Roadway Corridors (map color yellow): Main roadway corridor streetlights shall conform to the following standards:

- 1) Streetlights will be approved fixtures mounted on wooden, poles.
- 2) See chart for light levels
- 3) Streetlights will be placed at all street and crosswalk intersections.

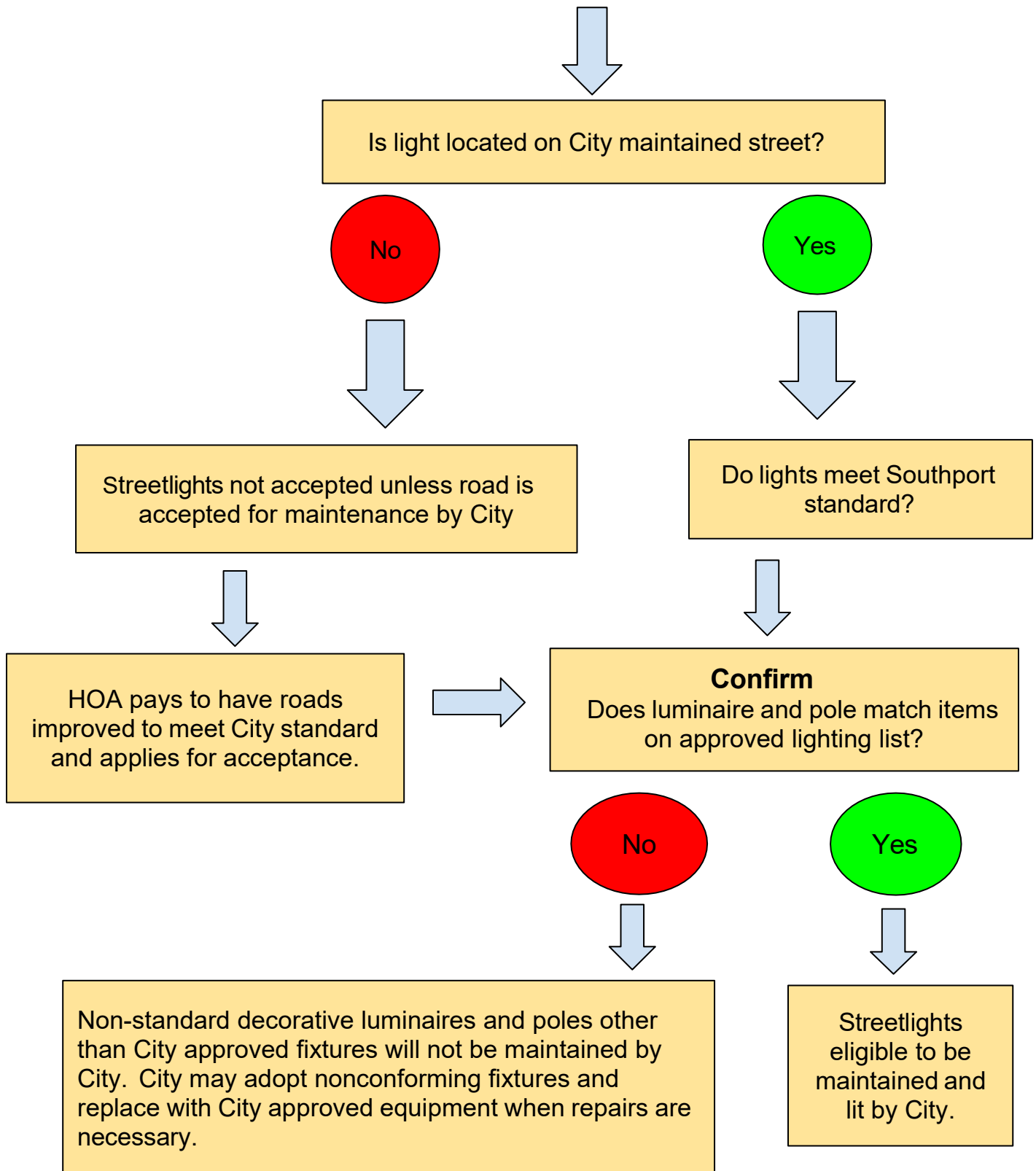
Nonconforming Lights

Luminaires (fixtures) existing as of April 14, 2022 in HOA/POA neighborhoods may remain and shall be considered nonconforming structures. However, nonconforming lights **will not** be maintained by the City even if such lights are on City maintained streets. Modifications, replacement, or expansions, shall conform to the standards of this policy. If HOA/POA neighborhoods desire to retain nonconforming lights and poles, those shall be maintained, repaired and/or replaced with the like kind, at the expense of the HOA/POA.

Appendix 1: Street light acceptance flow chart Appendix 2: Light levels chart

Appendix 3: Southport Street Lighting Request Form Appendix 4: Pictures of approved luminaires and poles Appendix 5: Map

Street light billing and maintenance acceptance chart



* Does not apply to Rivermist

Appendix 2

Light Level Chart

Foot Candle Measurements

Location of Lighting	Average	Minimum	Maximum
Waterfront, Commercial Downtown Areas and Central Business District Streets	1.2	0.6	1.5
HOA/POA and City Residential Streets	0.7	0.4	1.2
Main Roadway Corridors	.8	0.2	1.4



Southport Street Lighting Request Form

Name: _____ Date: _____

Address: _____

Telephone: _____ E-mail: _____

Neighborhood/Subdivision Name: _____

Street Light Request Petition with signatures must be attached.

Type of Request (check one): See page two (2) for required signatures

- _____ Street Light Relocation
- _____ New Street Light Installation

Identify below the streetlight in question if you are requesting a relocation.
If you are requesting a new light at a location without street lighting, identify the street and closest address.

Light Pole Number	Name of Street and closest address
_____	_____
_____	_____
_____	_____

Please mail or drop off the completed request:
Southport City Hall, 1029 N Howe Street, Southport, NC 28461
Attention: Electrical Supervisor/Load Management
For questions call 910-457-7938



Street Light Request Petition on City Maintained Streets

- For a light relocation or addition in a residential area, the signatures of the adjacent property owners on both sides of your property (the site of proposed change) and the three adjacent property owners across the street from your address are required. Additionally, lots in unique areas at intersections or corners shall include the signatures of properties within a 200 feet radius of the proposed change.

Location of proposed street light addition or relocation:

We the undersigned support the addition _____ or relocation _____ of a streetlight at the location listed above. (Check one)

Signatures:

_____	Address: _____
_____	Address: _____
_____	Address: _____
_____	Address: _____
_____	Address: _____
_____	Address: _____
_____	Address: _____
_____	Address: _____
_____	Address: _____

Completed petition must accompany request.

Approved Luminaires and Poles

Appendix 4



HOLOPHANE AWDE3
Acrylic Washington Postlite
P20

TYPE 35 Acorn Style
Black Pole
Color Temperature 2700K



American Revolution Full
Cutoff LED Series 247CL
P40

Colonial Style without lens
Black Pole
Color Temperature 2700K



Southport Special
GlasWerks Flat LED 2 Bern
GBLF2
Color Temperature 2700K
Cement Pole



Standard City Street Lights
Autobahn Series ATB0
Type 30
Type 33

Color Temperature 2700K
Wood, Pole