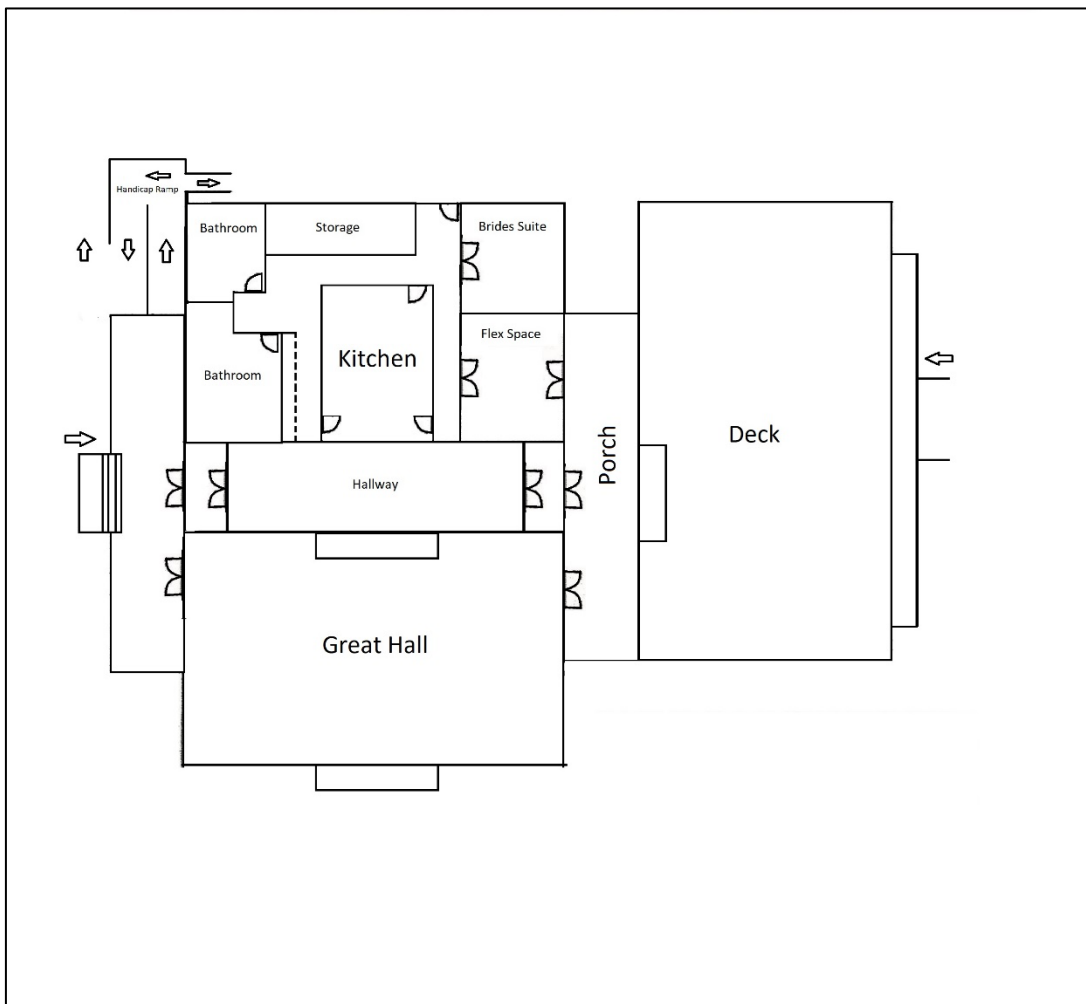


Southport Community Building



Our capacity, as determined by the fire marshal, is 160 people with a mix of some guests standing and some sitting. Included with your rental of the Southport Community Building is access to tables and chairs. Our tables and chairs are to be used indoors only. As a part of your rental agreement, we offer:

- Twenty (20) 60-inch round tables (*They can typically sit 8-10 people*)
- Eleven (11) 30x72-inch rectangle tables (*They can typically sit 6-8 people*)
- Nine (9) 32-inch square tables
- Three (3) 48-inch round tables
- One hundred and eighty (180) chairs

In order to have them set up for you on the day of your event, you will need to send us a copy of this layout with notes on how you would like your tables and chairs placed within the building. We need the layout returned to us at least thirty (30) days prior to your event. A blank layout has been provided to you on the next page.

Southport Community Building

